

Contents

Thank you for using PeerSync. This product can save you many hours of file matching time if used carefully. Please practice using this product on non-essential data until you are comfortable using the many features.

The manufacturer of PeerSync makes no warranties, implied or otherwise, for use of this product. User assumes all responsibility for any data loss or damage. The following Help Topics are available:

The following Help Topics are available: (For Help on Help, Press F1)

What's New in this Release

PeerSync History and Overview

Registering and Password

PeerSync Menus

Automatic Operation

Folder Selection

Synchronize

Build Batch Lists

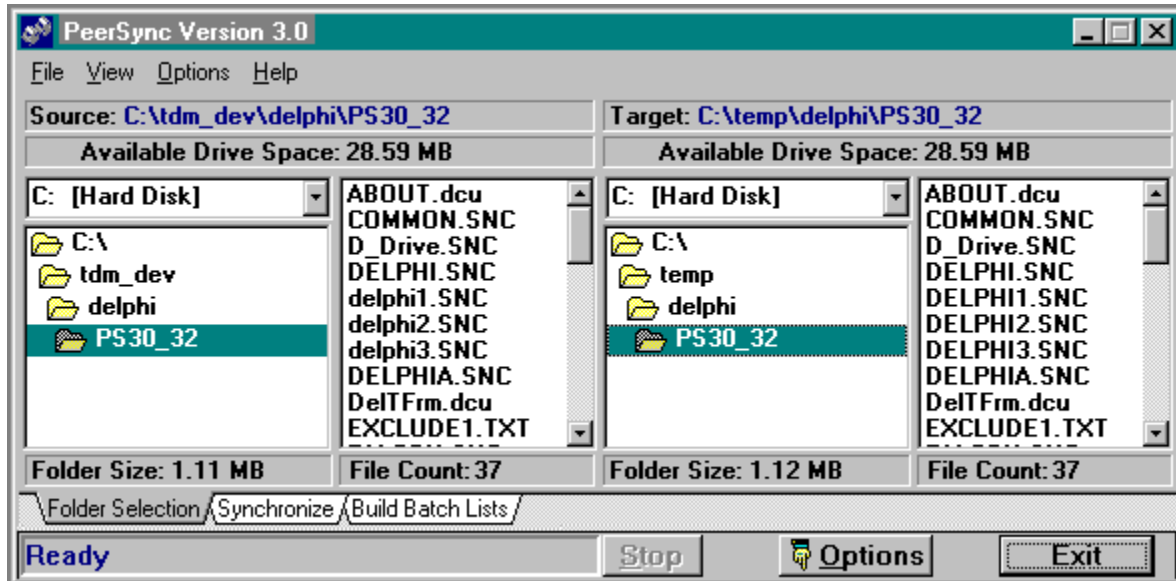
File Options

Reporting

Run Batch Lists

Folder Selection

See Also [File Options](#)



The Folder Selection screen displays the Source and Target folders. Use this screen to change to the folders requiring synchronization. Displayed files represent the files that fit the [File Options](#) screen criteria. If any files are set to be excluded from the File Options screen, they are not displayed in this list.

Folder Selection Features:

Sorting: File listings can be displayed in the native order or sorted alphabetically by choosing the "Sort File Lists" item under the [Options](#) menu

Swapping Folders: The Source and Target folders can be swapped by selecting the "Swap Source and Target" menu item under the [Options](#) menu.

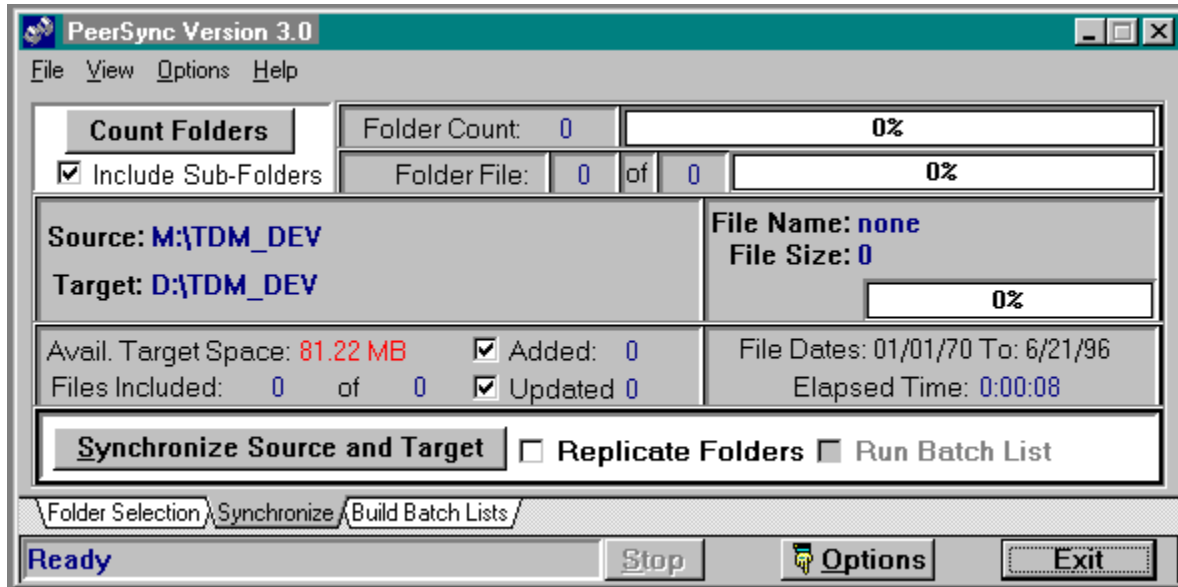
Drag and Drop Files: Files can be selected from the source file listing and dragged to the target file listing. This allows for selective file synchronization.

Deleting Files: Files can be deleted from the source or target file listings by highlighting the file(s) and then selecting the Delete key.

Pop Up Menus: Chose the Enable PopUp Menus item under the [Options](#) menu to enable the pop up menus for the file and folder pop up menus. To activate the pop up menus, move the cursor over either the folder or file listing and select the "off" mouse button (normally the right button).

Synchronize

See Also [File Options](#), [Run Batch Lists](#), [Reporting](#)



Use the Synchronize screen to perform the selected folder synchronization.

Synchronize Features:

Count Folders: Counts all folders associated with the current source folder selection. If used, the Folder Count will decrement as folders are synchronized and the thermometer indicator will show folder count progress. (This thermometer measures folder count.)

Folder File (Count): Displays the total number of files requiring synchronization from the current source folder and the number of files that have already been synchronized from this folder. The thermometer indicator will show file synchronization progress for the current folder. (This thermometer increments by the size of the current file. 100% represents the cumulative file size of files listed in the source file listing.)

Include Sub-Folders: Sets an internal flag to synchronize the current folder and all sub-folders. This option is duplicated in the [File Options](#) screen.

Added: Sets an internal flag to add files that do not currently exist in the current target folder. This option is duplicated in the [File Options](#) screen. As files are added, the count is incremented.

Note: This label "Added" will change to "Add" when the [Pre-Sync](#) reporting function is selected.

Updated: Sets an internal flag to update outdated files that exist in the current target folder. This option is duplicated in the [File Options](#) screen. As files are updated, the count is incremented.

Note: This label "Updated" will change to "Update" when the [Pre-Sync](#) reporting function is

selected.

File Dates: Displays the active include date settings that are set in the [File Options](#) screen.

Elapsed Time: Shows the amount of time past since the “Synchronize Source to Target” button was selected.

Synchronize Source to Target: This button activates the synchronization process for the current source and target folders.

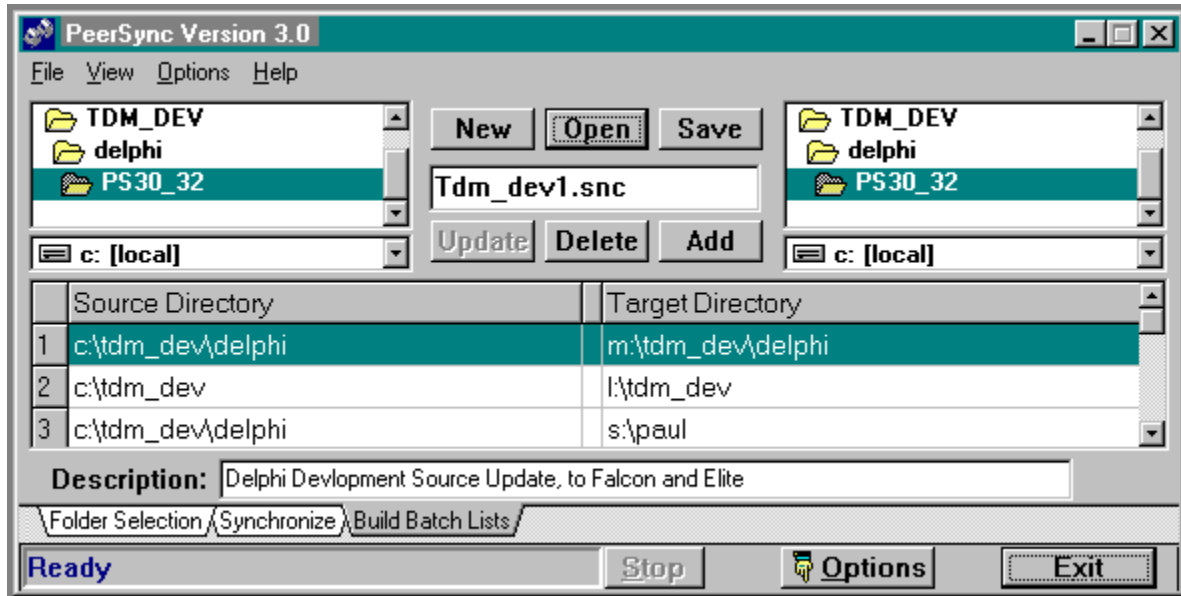
Note: The description of this button will change to “Synchronize Batch List” if batch processing is available or may change to “Replicate...” if replication is selected.

Replicate Folder: This option is duplicated in the [File Options](#) screen.

Run Batch List: This toggle is available if a batch list has been loaded. By default this toggle is on if a batch list is loaded, however, you can turn off batch mode by deselecting this option. This allows you to use the batch list as a source for selecting individual folder combinations without having to manually change to each of the source and target folders. See [Run Batch Lists](#) for more information.

Build Batch Lists

See Also [Run Batch Lists](#)



This screen allows you to build batch lists containing multiple source and target folder combinations. This list can contain 10 or more individual combinations of folders and each item in the list can have its own unique set of file options as set in the [File Options](#) screen.

Build Batch Features:

Bi-directional synchronization: Build a batch list with the source and target folders entered twice, with the second item in the list showing the folders reversed. (You can use the “Swap Source and Target” function in the [Options](#) menu.)

Changing the batch list order: Using the mouse, select the line item to be moved, then click and drag that item to its new position in the list. The items in the list will automatically be re-indexed.

Activating an Item: Clicking on an item in the list will change the selected folders in the source and target folder and drive listing.

New: Clears the current list (if any).

Open: Displays a file open dialog box allowing you to select an “SNC” batch file.

Save: Displays a file save dialog box allowing you to save the current batch.

Add: Adds an item to the bottom of the current list of items. All settings in the [File Options](#) screen will be stored with the added item.

Delete: To delete an item from the list, first select the item by clicking the mouse on it then

select the delete button.

Update: To update an item in the list, click on the item to be updated, then make the appropriate changes to the drive, folder and file options, then select the Update button to capture all changes for the selected item.

Description: This text field allows you to store a more detailed description of the active batch file.

Manually Editing Batch Items:

To manually edit an item in the batch list, click the mouse on the line item to be edited and then click the right (or off) mouse button. You can then use the keyboard to modify the selected item.

For Win95/NT only: Network paths (UNC) can be explicitly entered in the source and target fields of the batch build screen. Example path name: "\\BackOffice\c\apps". If the path is valid, PeerSync will synchronize files during Batch Processing.

File Options

The screenshot shows the 'File Options' dialog box with the following settings:

- File Attributes:** Archive, Read Only, System, Hidden
- File Dates:** From: 01/01/80 To: 2/1/96 ; Today and Past 5 Days; All; From: 01/01/70 To: 05/01/96
- File Filters:** *.*
- File Exclusions:** .SWP;.BAK;.TMP;~
- Misc File Options:** Include Sub-Folders, Create Sub-Folder, Add Files, Update Files, Replicate Folders

The File Options screen provides a means for selecting files for synchronization.

File Options Features:

File Attributes: Select the attributes of the files you would like to include.

File Dates: Set the dates of the files you would like to include. You can set the system to automatically select any file changed in the past X number of days by selecting the “Today and Past X Days” option. This setting will always use the current PC system date and X number of days prior. A value of zero (0) represents files that have changed today only.

File Filters: Setting the file filters will reduce the set of files that are considered for synchronization. Multiple filters can be set by separating them with a semi-colon, “;”. For example:

- *.* is the default setting
- *.doc MS Word documents only
- *.doc;*.wks MS Word documents and Excel worksheets.

Note: These filters are not case sensitive, i.e.: “*.doc” = “*.DOC”.

Each filter that is set can be saved in the pull down list by selecting the “Enter” key after the filters are set. This list of filters will be retained in the application initialization file and the filters will then be available for future use. The last filter setting that is set when the application is terminated, will be the filter set used on subsequent running of the application. The list will retain a maximum of 10 filter settings. To delete a setting, select the desired setting and hit the “delete” key. See [PeerSync Menu](#) for more information regarding saving and retrieving initialization settings.

File Exclusion: Files can be selectively excluded by several methods. The first method is to identify characters or sets of characters, strings, to search for within the file name. If a file name contains this string, the file is eliminated from the file listing. Multiple strings can be designated by separating them with a semi-colon, “;”. For example eliminate::

- tmp - if any file contains "tmp"
- .tmp - if any file that has the extension "tmp"
- “.bak;.tmp” - if any file that has the extension "tmp" or "bak"
- or an extreme example
- “s;f;g” - if any file contains either an "s", "f" or "g"

Note: These strings are not case sensitive, i.e.: "a" = "A"

The next method of file exclusion is to set the maximum file size (in bytes). For example to exclude files larger than 500K, enter **>500000**. Zero (0), the default, includes all files.

The third and last method to eliminate files is to set the minimum file size (in bytes). For example to exclude files smaller than 10K, enter **<10000**. To exclude files of size zero (0), enter **<1**. Zero (0), the default, includes all files.

Misc. File Options:

Include Sub-Folders: Sets an internal flag to recursively synchronize the current folder and all sub-folders. This option is duplicated in the Synchronize screen.

Create Sub-Folders: If the option is selected, PeerSync will automatically create or change to a matching folder in the target folder if one does not exist with the current source folder name. If this option is not on, the contents of the current source folder will be synchronized to the current target folder. If Include Sub-Folders is selected, all subsequent sub folders will be changed to or created on the target folder.

Add Files: Sets an internal flag to add files that do not currently exist in the current target folder. This option is duplicated in the Synchronize screen.

Update Files: Sets an internal flag to update older files that exist in the current target folder. This option is duplicated in the Synchronize screen.

Replicate Folders: If this option is selected, all File Options settings will be ignored and PeerSync will Synchronize all files from the Source folder to the Target folder. Any UnMatched files in the Target folder will be deleted automatically. Use this feature with caution. There is no way to recover deleted files with this utility.

Reporting

The screenshot shows a software interface for configuring reporting and log file settings. It features two main panels: 'Log File Settings' and 'Reporting'. The 'Log File Settings' panel includes a 'Create Pre-Sync Report' button with a text field for the file name (PreSync.Log), an 'Overwrite' checkbox, and a 'View' button. Below this is a 'Use Log File' section with a text field (PeerSync.Log), an 'Overwrite' checkbox, and a 'View' button. An 'Include' section contains a grid of checkboxes for 'Updated Files', 'Added Files', 'Empty Folders', 'File Size', 'File Date', 'File Time', 'Folder Creation', 'File I/O Errors', and 'Application Errors'. The 'Reporting' panel has checkboxes for 'Use Report Form' and 'List UnMatched Files', and a 'Display Reports' button. At the bottom, there are three tabs: 'File Options', 'Reporting', and 'Run Batch Lists'.

The Reporting screen provides a means for selecting the type of information you require in your log files. Additionally you can run a report prior to actually synchronizing the selected folders.

Log File Settings:

Create Pre-Sync Report: Select this option to run a report prior to actually synchronizing the selected folders. All options and criteria for synchronization are utilized, except the actual copy function is bypassed. During this operation, any folders that do not exist will be temporarily created and then deleted at the end of the operation. Please note that the report will reflect all files that require synchronization (based on selected criteria) even if those files are in use at the time. No message is displayed for files that are not accessible during this operation.

File Name: Enter the file name for the pre-sync report. The default name is PreSync.Log.

Overwrite: This option determines if the file will be appended or overwritten.

View: Opens the file in the file name field using the standard windows NOTEPAD (or WRITE or WORDPAD) editor program.

Use Log File: This option determines if a log file will be created/appended. There is only a slight performance loss using this option.

File Name: Enter the file name for the log file. The default name is PeerSync.Log.

Overwrite: This option determines if the file will be appended or overwritten.

View: Opens the file in the file name field using the standard windows NOTEPAD (or WRITE or WORDPAD) editor program.

Include Updated Files: Add a line for any file that is updated.

Include Added Files: Add a line for any file that is added.

Include Empty Folders: Add a line for every folder that is checked even if no files require synchronization from the folder.

Include File Size: Include file size on same line as file name.

Include File Date: Include file date on same line as file name.

Include File Time: Include file time on same line as file name.

Include Folder Creation: Include line identifying any folders that did not exist on the target and had to be created.

Include File I/O Errors: Include any file input/output errors generated by the application.

Include Application Errors: Include any application errors.

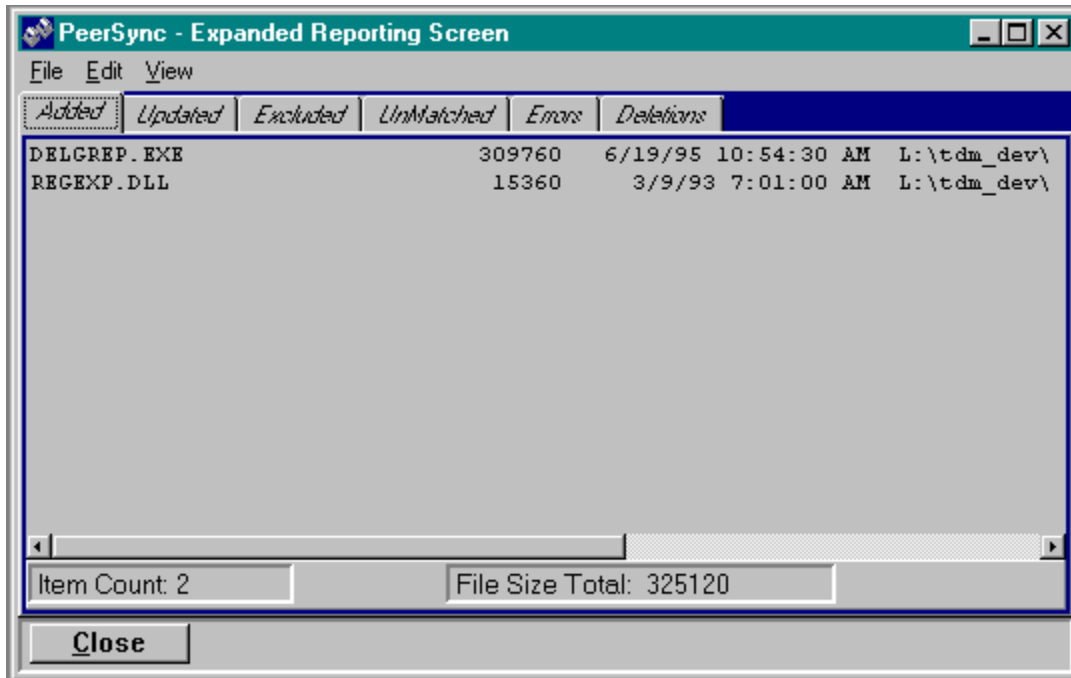
Note: Application errors are additionally written to a file called "PSError.LOG" even if this option is not selected.

Reporting

Use Report Form: This option will send added, updated, excluded, unmatched (if selected), errors, and any deleted files to separate lists in the Reporting Form. Additional program overhead/time is required to use this feature.

List UnMatched Files: If selected, all target files are added to the list and subsequently removed as source files are found that match them. Remaining files after synchronization is completed are unmatched in the Source folder. Additional program overhead/time is required to use this feature.

Display Reports: Toggles the Expanded Reporting Form on and off.



Run Batch Lists

See Also [Build Batch Lists](#)

	Source Directory	Target Directory
1		
2		
3		
4		

Run Batch List screen is the means by which you can perform the synchronization of the folder lists created with the Build Batch Lists screen.

Run Batch Features:

File Name: Use this pull-down list to select a previously loaded batch list. Selecting a blank item from the list will automatically select the “Open” button. This list of files will be retained in the application initialization file and the files will then be available for future use. The last file that is selected becomes the first file in the list. The list will retain a maximum of 10 files. To delete a file from the list, select the desired file and hit the “delete” key. See [PeerSync Menus](#) for more information regarding saving and retrieving initialization settings.

If the selected batch file is currently loaded in the [Build Batch List](#) screen, it is automatically removed cleared from the Build Batch List so editing will not occur during usage. Be sure the batch file was saved in the Build Batch List screen prior to selecting it this way. Loss of any changes may occur.

Open: This button displays the file open dialog box allowing the user to select a batch “SNC” file to load. On the [Synchronize](#) screen, the synchronization button is set to “Synchronize Batch List” and the “Run Batch List” option is toggled on.

Clear: The clear button removes any loaded file from the batch listing. On the [Synchronize](#) screen, the synchronization button is reset to “Synchronize Target to Source” and the “Run Batch List” option is toggled off and grayed out.

Edit: The edit button sends the loaded batch file to the [Build Batch List](#) screen automatically and clears it from this screen. This prevents using a batch list that may be edited (changed), forcing you to reload the list to actually run it.

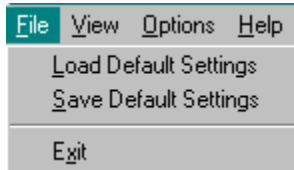
Description: This is the description that was entered for the file when it was created.

Selecting an Individual Batch Item: By clicking on an individual item in the list, you can selectively run just that folder combination. To accomplish this, turn off the “Run Batch List” option on the [Synchronize](#) screen prior to selecting the “Synchronize Source to Target” button.

All file options associated with this item will be used for the synchronization process.

PeerSync Menus

File Menu Description

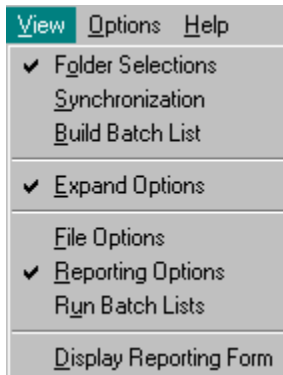


Load Default Settings: This item loads the last saved initialization file. If no file exists, default settings are assumed.

Save Default Settings: This item saves the current application settings to the initialization file.

Exit: Closes PeerSync and saves the current data to the initialization file if the “Save Settings On Exit” option is checked in the Options Menu (see below).

View Menu Description



Folder Selection: Selects the Folder Selection Tab item in the Main Window.

Synchronize: Selects the Synchronize Tab item in the Main Window.

Build Batch Lists: Selects the Build Batch Lists Tab item in the Main Window.

Expanded Options: Expands/Reduces the Expanded options screen. When the options are displayed, the application height will approximately double with the display of the expanded options screen.

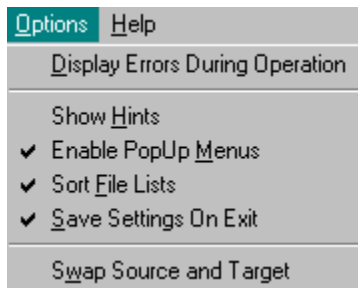
File Options: Selects the File Options Tab item in the Options Window.

Reporting Options: Selects the Reporting Tab item in the Options Window.

Run Batch Lists: Selects the Run Batch Lists Tab item in the Options Window.

Display Reporting Form: Toggles the Expanded ReportingForm on and off.

Options Menu Description

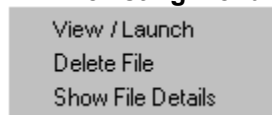


Display Errors During Operation: This option suppresses all message displays during any operation. Where applicable, messages are responded to automatically, i.e.: If a file is not accessible, "Ignore" is selected automatically as if the user had responded manually. When a choice would be required manually, the choice that will allow the process to continue is chosen (if applicable).

Show Hints: Within the PeerSync application there are many items that contain simple help information that help with understanding the functionality of the item. This option toggles the display of these hints on/off. Hints are displayed when the cursor is idle and over the item in question. Not all items in PeerSync have hints associated.

Enable PopUp Menus: This option toggles the display of the Pop up menus that are available for the folder and file listing items in PeerSync. When enabled, the off (usually right) mouse button can activate a pop up menu for the item that the cursor is currently over.

File listing menu is as follows:

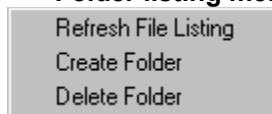


View/Launch File: This option will open the selected file using the standard Windows Notepad editor program. If an application with the ".EXE" or ".BAT" extension is detected, this option will launch (run) the selected application.

Delete File: Displays a dialog box asking if you want to delete the selected file(s). Always verify that the file you want to perform this action on is first selected (highlighted) in the list.

Show File Detail: Displays a dialog box with the File Name, Size, Date, Time and Attributes. Always verify that the file you want to perform this action on is first selected (highlighted) in the list.

Folder listing menu is as follows:



Refresh File Listing: Updates the folder/file list in the current folder. This is usually done automatically from within PeerSync as the need arises.

Create Folder: Displays a dialog box that will allow you to change to an alternate folder or create a new folder that does not currently exist.

Delete Folder: Displays a dialog box asking if you want to delete the selected folder. Always verify that the folder you want to perform this action on is first selected (highlighted) in the list. If the folder is not empty, you will be prompted prior to deleting all files within the folder. This function is recursive, i.e.: all sub-folders within the selected folder will be automatically deleted when you select yes to the prompt for file deletion.

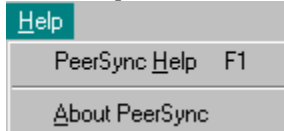
Sort File Lists: This option toggles on/off the file listing sort option. When checked the files

listed in the source and target file listings will be sorted alphabetically. When sorting is not selected, the files are listed in the order which they were added to the folder (native arrangement). This option is only available from the Folder Selection screen.

Save Settings On Exit: When this option is checked, all file options and menu settings are saved to the initialization file when the application is closed. Disabling this option allows you to make changes for the current process without changing your default settings.

Swap Source and Target: This option automatically swaps the folder in the source listing with the target listing.

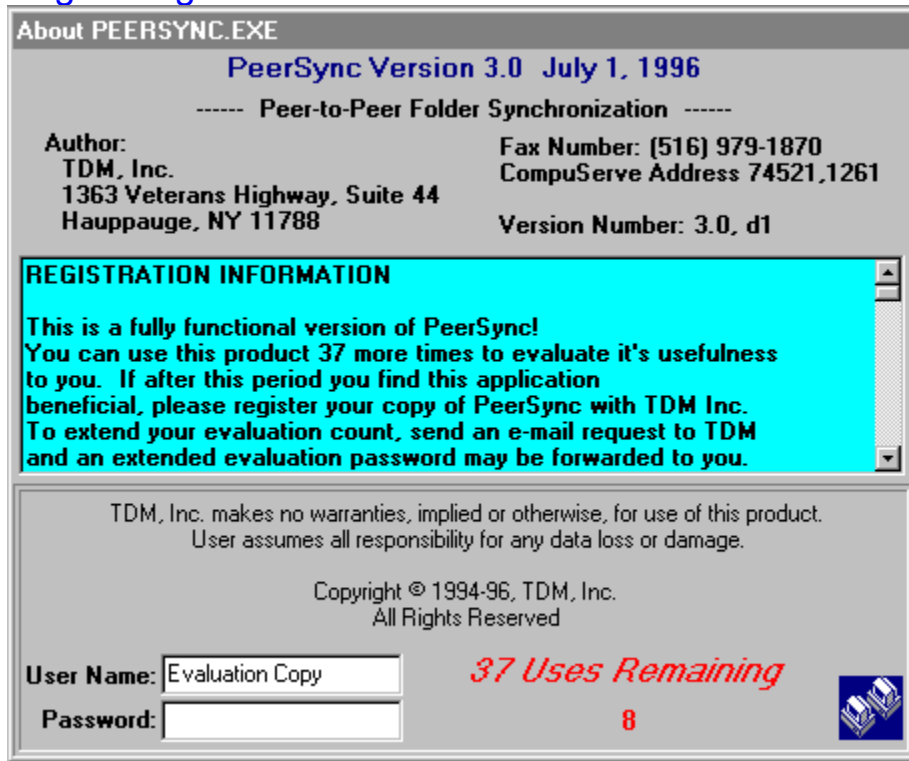
Help Menu Description



PeerSync Help: Load the on-line help file. Help can also be initiated by selecting “F1” from your keyboard. The current PeerSync screen will be the active help screen displayed.

About PeerSync: Displays the About PeerSync dialog box.

Registering and Password



Registering PeerSync:

You can register **PeerSync** by sending a check or money order for \$48 (US) to:

TDM, Inc.
1363 Veterans Highway, Suite 44
Hauppauge, NY 11788

or

VIA CompuServe using the Software
Registration facility:
-- GO SWREG, Key Word Search: PeerSync

Registered PeerSync Version 1 and 2 users can upgrade to version 3.0 for \$28 (US).

Discount Schedule - applies to quantity requested in same order:

Quantity	Discount
5 copies for the price of 4	10%
10 copies for the price of 8	10%
25 copies for the price of 19	24%
50 copies for the price of 35	30%

75 copies for the price of	40%
45	
100+ at half price	50%

Upon registering PeerSync, a password will be generated from your name. This password will be faxed or e-mailed to you and will activate your current copy of PeerSync. Please note, TDM will not mail any disks unless specifically requested by purchaser and additional shipping and handling fees are paid to TDM. All software will be activated via generated password sent over fax or e-mail

If you need to install this application on a different PC than where it was initially run, Fax or e-mail a request to TDM for a new password. TDM will provide one additional password for a second PC if that PC will be operated by the same individual. Otherwise, additional license fees must be paid for multi-user use.

=====

Please fax or e-mail any comments you may have that can help us to improve this product.

=====

PeerSync may not be commercially distributed, distributed by government agencies or any of its contractors, UNLESS registration fees are paid for by the distributing party.

This file may not be included in CD-ROM distributions, bundled with other files, or offered for retail sale without contacting TDM, Inc. and obtaining a license.

=====

You may share evaluation copies of the software with others provided it is not for revenue and all original files are part of the distribution.

=====

Note regarding updates: as new updates/changes become available, updated versions of the software will be posted on CompuServe, WinShare forum. Check this forum periodically and dowl load the latest executables. Your authorization key will contnue to work with the updated versions until either a major release is issued or you install PeerSync in a different folder than you installed the authorized version of PeerSync.

TERMS AND CONDITIONS

READ THIS BEFORE USING THIS PROGRAM. BY USING THIS PROGRAM, YOU ARE AGREEING TO THESE TERMS AND CONDITIONS.

TOP-DOWN MAINTENANCE (TDM), INC. SPECIFICALLY DISCLAIMS ALL WARRANTIES, EXPRESS OR IMPLIED, INCLUDING BUT NOT LIMITED TO IMPLIED WARRANTIES OF MERCHANTABILITY AND FITNESS FOR A PARTICULAR PURPOSE, WITH RESPECT TO THIS PROGRAM.

TDM, INC. SHALL HAVE NO LIABILITY WITH RESPECT TO ANY LOSS OR DAMAGE DIRECTLY OR INDIRECTLY ARISING OUT OF THE USE OF THIS PROGRAM. WITHOUT LIMITING THE FOREGOING, TOP-DOWN MAINTENANCE, INC. SHALL NOT BE LIABLE FOR ANY LOSS OF PROFIT, INTERRUPTION OF BUSINESS, DAMAGE TO EQUIPMENT OR

DATA, INTERRUPTION OF OPERATIONS OR ANY OTHER DAMAGE, INCLUDING BUT NOT LIMITED TO DIRECT, INDIRECT, SPECIAL, INCIDENTAL, CONSEQUENTIAL OR OTHER DAMAGES.

Please Fax or CompuServe any suggestions, comments or requests for support to the proprietor of PEERSYNC.EXE:

TDM, Inc.
1363 Veterans Highway, Suite 44,
Hauppauge, NY 11788

Fax Number: (516) 979-1870
CompuServe Address 74521,1261

Copyright 1994-1996, TDM, Inc.

All Rights Reserved. Reproduction in whole or in part without permission is strictly prohibited.

Entering Your Password:

After registering PeerSync, you will receive a User Name and a Password. To enter this information in PeerSync, start PeerSync. Select "About PeerSync" from the Help menu, enter your User Name and Password in the appropriate text fields in the lower left side of the About PEERSYNC.EXE dialog box. Be sure to enter the information exactly as you have received it.

After entering an acceptable User Name and Password the :About PeerSync: dialog box will change and be displayed as follows:

About PEERSYNC.EXE

PeerSync Version 3.0 July 1, 1996

----- Peer-to-Peer Folder Synchronization -----

Author:
TDM, Inc.
1363 Veterans Highway, Suite 44
Hauppauge, NY 11788

Fax Number: (516) 979-1870
CompuServe Address 74521,1261


Version Number: 3.0, d1

TDM, Inc. makes no warranties, implied or otherwise, for use of this product.
User assumes all responsibility for any data loss or damage.

Copyright © 1994-96, TDM, Inc.
All Rights Reserved

User Name:

Password:



Additionally the About PeerSync dialog box will appear at the start of PeerSync for approximately 3 seconds. The evaluation copy is set on an 8 second timer



PeerSync History and Description

Welcome to the TDM Corporations Folder Synchronization Utility Software, **PeerSync**. With this utility you will be able to conveniently synchronize folders for backup purposes or portability requirements. Never again will you overwrite newer files by manually attempting to update a file or the entire contents of a folder.

History:

PeerSync has been available as a shareware product on the CompuServe network since early 1995. Since then over 500 downloads have been logged from the various international forums where the product was available. PeerSync is a MS Windows based product. Originally written in Visual Basic, the current product is written in Delphi Object Pascal. After reviewing several commercially available solutions to the problem of keeping files in sync between multiple hard drives, it became apparent that what was available was either not user friendly or did not satisfy our needs, hence the development of PeerSync. Typically one of our developers would work on-site at a customers location or at home during crunch schedules and then would have to synchronize data back to the office server after returning to the office. Typically this was done manually, i.e. individual files were dragged to the appropriate server folder. This usually ended in frustration because invariably one, or several, files on the server would be newer and subsequently overwritten causing loss of data. This process was also time consuming. Anywhere from 20 minutes to 2 hours was spent during each synchronization.

Description:

PeerSync offers an intuitive interface that shows the user exactly what is required to synchronize multiple directories and sub-directories easily and efficiently. PeerSync allows folder matching between any connected drive on a local computer or network of computers.

File dates and times are checked and only synchronized if target files are in fact older. Extensive filtering capabilities have been incorporated. Files can be filtered using standard DOS type wild card filters. Files can be excluded using sub-string comparisons, or file attribute settings. Additionally files can be excluded by dates or file size. The user has the choice of updating and or adding target files.

Batch mode and command line mode operation are also available. Virtually unlimited numbers of folder combinations can be selected and stored in batch files that can be run manually or automatically from the command line arguments. Each folder combination can have a unique set of inclusions and exclusions allowing for very precise folder matching in an automated environment.

PeerSync is also used for network file management purposes. The latest version allows network administrators to generate a complete report of what files have changed or been added prior to actually synchronizing them. Reports can be created during actual synchronization runs showing added, updated and opened files, created directories and unmatched files in target directories.

PeerSync is Fast! Comparison of 10,000+ files can take less than 2 minutes (speed will vary with equipment used).

Automatic Operation of PeerSync

See Also [Build Batch Lists](#), [Reporting](#), [File Options](#)

To run PeerSync automatically, you must first create a batch list of folders to synchronize.

1. Select the PeerSync icon as follows:

Win 3.X: Select the PeerSync icon in the Program Manager and hit Alt-Enter to display the file information dialog box.

Win 95: Select the PeerSync icon from the PeerSync folder and create a shortcut to PeerSync. Select the shortcut icon and hit Alt-Enter or using the right mouse button, select "Properties" from the pull down menu. Go to the "Shortcut" tab.

2. At the end of the application command line enter the name of the Batch List file that you want to run.

Note: Quotes are required if there are any blank spaces used in the file/path names.

Example: "C:\PEERSYNC\PS_32.EXE" "NETBAT1.SNC"

3. Leave a space and enter "AUTORUN" if you want the synchronization to commence automatically. Without AUTORUN, PeerSync will start with the batch file loaded as the default settings.

Example: "C:\PEERSYNC\PS_32.EXE" "NETBAT1.SNC" AUTORUN

4. To run PeerSync minimized during AUTORUN operations, leave a space after AUTORUN and type "MIN". MIN can only be used with AUTORUN.

Example: "C:\PEERSYNC\PS_32.EXE" "NETBAT1.SNC" AUTORUN MIN

5. Change the name of the icon to reflect the automatic operation name.

6. Repeat this operation for each automatic operation required.

Additionally, command line arguments can include default folders for PeerSync to start in when launched. If one folder is listed then both source and target default to that folder.

Example: "C:\PEERSYNC\PS_32.EXE" "C:\DOCS"

If two folders are listed, separated by a space, then the first folder is the default source folder and the second is the default target folder.

Example: "C:\DOCS" "G:\DOCS"

Any icons that get created can be automatically launched from within a scheduling program at specified intervals.

What's New In This Release

This release of PeerSync includes:

- Updated version for MS Windows 3.1 (16 bit version)
- New version for MS Windows 95 and MS Windows NT with long file name support (32 bit version)
- Both the 16 and 32 bit versions are functionally identical
- Added ability to drag and drop selected file(s) from the source folder to the target folder
- Folder/file replication function
- Improved reporting
- Ability to create a preliminary report prior to synchronization
- Log reports can now be overwritten or appended with no size limitation
- File lists that display included and excluded files
- Progress indicators for file copy progress, folder file completion, and total folder count completion
- Improved batch building capability and flexibility
- Improved command line operation
- Improved unattended operation. Full message suppression is now available during synchronization
- Entire application is compiled in one executable, unlike the Visual Basic release of PeerSync which required supporting DLL's to operate.
- Faster operation
- Better error reporting
- More flexibility for folder selection
- Better background operation
- Expanded file inclusion and exclusion capability
- Better user interface, all options are available through direct screens instead of dialog boxes
- Files can be opened or launched from the file list display
- File listings can now be sorted
- File attribute of target file is set to match source file
- Improved international format support

Items being considered for future releases:

- Compression of target folders
- Improved removable media support
- Virtual folder tree mapping (pointing to one tree to determine results of actual tree synchronization)
- Built-in timer/scheduler

Please feel free to fax or e-mail your suggestions for future releases.

Replication

See Also [File Options](#)

Replication can be accomplished Automatically or Manually with PeerSync:

1. **Automatic** file replication of Target folder with Source folder can be selected from the File Options form.

When the Replicate toggle is selected, a dialog box will appear with a warning regarding deletion of unmatched files in target folder. You will also be able to input a delay, in seconds, prior to file deletion. (A value of 0 will bypass delay.)

When Replicate is selected, all file option selections are ignored. Replication implies that you want all files to match on source and target.

2. **Manual** file replication of Target folder with Source folder can be accomplished by selecting the List UnMatched Files option in the Reporting form and setting all file options in the File Options form to include all files.

After running Synchronize Source to Target, you can delete any unmatched files from the Reporting forms UnMatched listing.

